

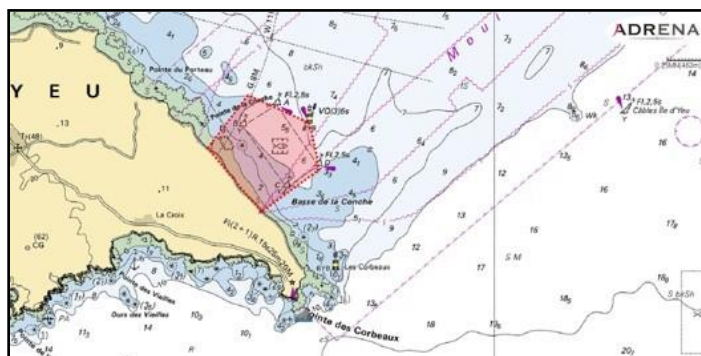
# 2023 Transgascogne Puru

## Appendix 2 - Forbidden areas

### 11 - FORBIDDEN AREAS

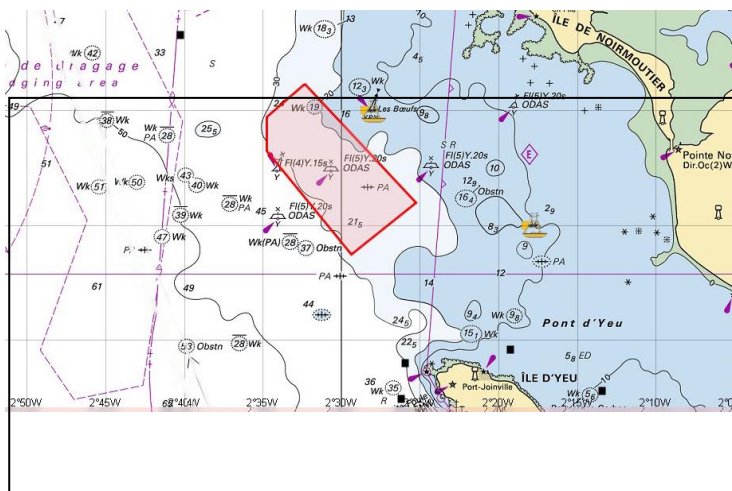
#### 11.1 - Aquaculture of l'Ile d'Yeu

	LATITUDE	LONGITUDE
Aquacole S	46°42,075 N	02°17,140 W
Aquacole E	46°42,230 N	002°16,830 W
Cardinale Est	46°42,525 N	02°16,900 W
Aquacole N	46°42,650 N	02°17,250 W
Aquacole W	46°42,505 N	02°17,590 W



#### 11.2 - Yeu-Noirmoutier wind farm

	LATITUDE	LONGITUDE
B	46°56,4378 N	02°31,7055 W
G	46°50,9894 N	02°25,2789 W
H	46°48,7257 N	02°29,3584 W
I	46°53,2409 N	02°34,7479 W
K	46°54,7333 N	02°34,7760 W



#### 11.2 -Guérande wind farm

	LATITUDE	LONGITUDE
F01	47°12,114 N	02°41,431 W
G02	47°12,527 N	02°39,619 W
E05	47°10,603 N	02°37,970 W
E09	47°09,786 N	02°35,113 W
G04	47°10,724 N	02°34,775 W
G08	47°09,896 N	02°30,925 W
E15	47°08,917 N	02°30,006 W
A13	47°07,239 N	02°33,168 W
A01	47°08,839 N	02°41,925 W
D01	47°10,778N	02°41,206W

